

# USG - W06 - WALL PARTITION SYSTEM

## INTERNAL PARTITION

### USG Middle East

Main Office:  
7410 (Wasil), Street #23, Cross 76. 2<sup>nd</sup> Industrial City  
Dammam 34425-4201, Kingdom of Saudi Arabia  
+966 13 812 0095 [www.usgme.com](http://www.usgme.com)

Project Name \_\_\_\_\_

Title : Project Status \_\_\_\_\_

Owner \_\_\_\_\_

Architect \_\_\_\_\_

Status  Study  Execution  Installation

Examined and approved by the customer \_\_\_\_\_

Scale : as shown  
Reference-Drawing : -

Created : / /  
Checked : / /  
Drawing : / / Revision: 1

Revised \_\_\_\_\_

©2020 Factory of USG Middle East LTD. Co. All rights reserved.  
FACTORY OF USG MIDDLE EAST reserves all rights to the information disclosed in this drawing. Such information may not be copied nor forwarded in any other form to third parties without the express consent in writing of Factory USG Middle East for the purpose of manufacture or purchase of the products or parts shown.

Final revision to be issued and approved by USG ME Technical Team

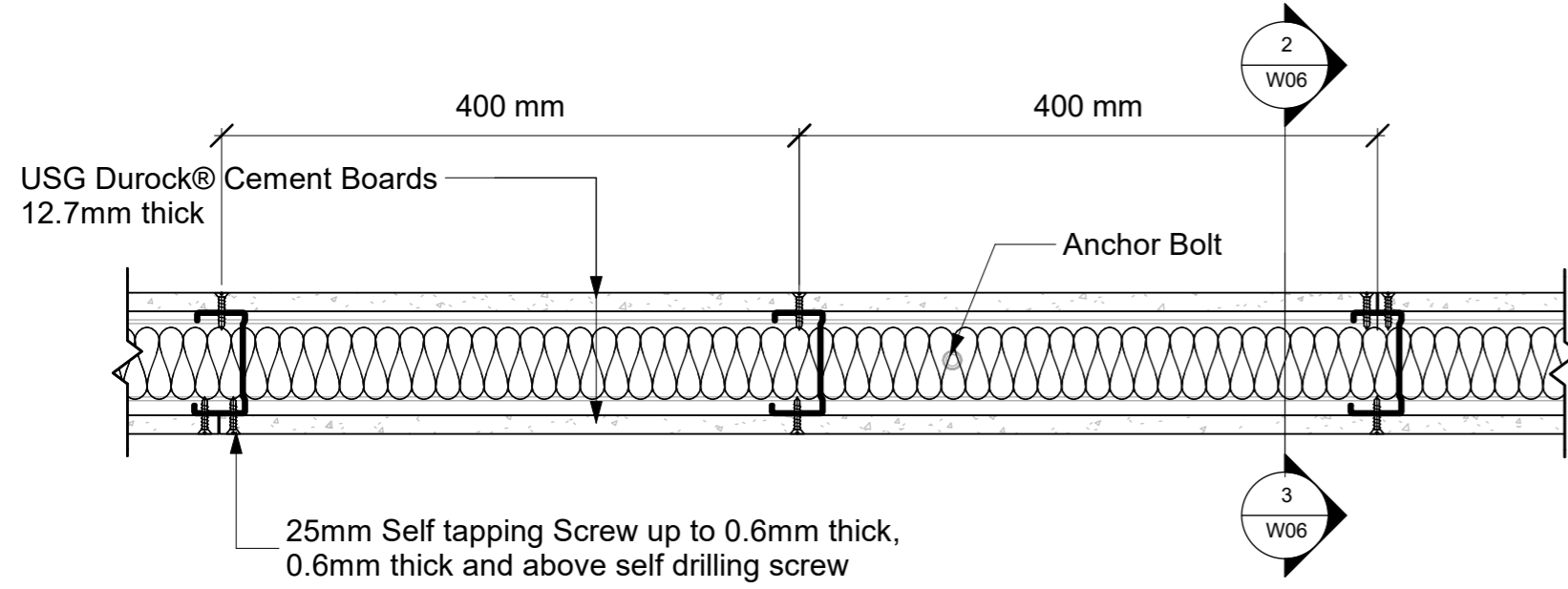
General Notes:

Client Stamp:

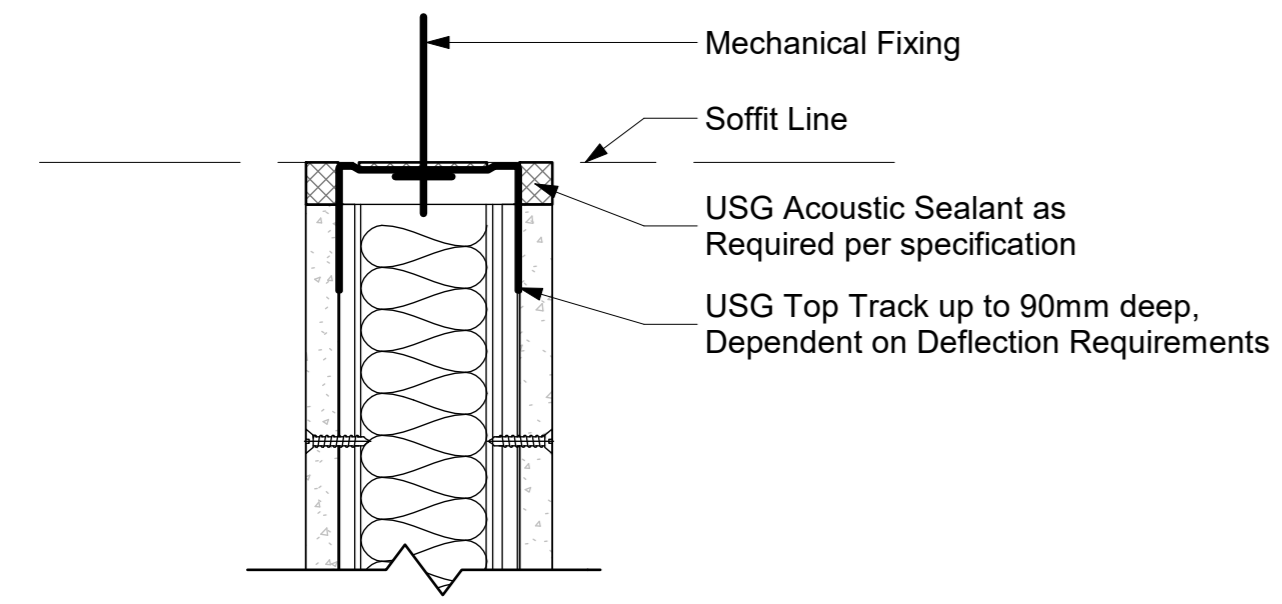
Client Logos

Project Date: \_\_\_\_\_  
Drawing Number: \_\_\_\_\_

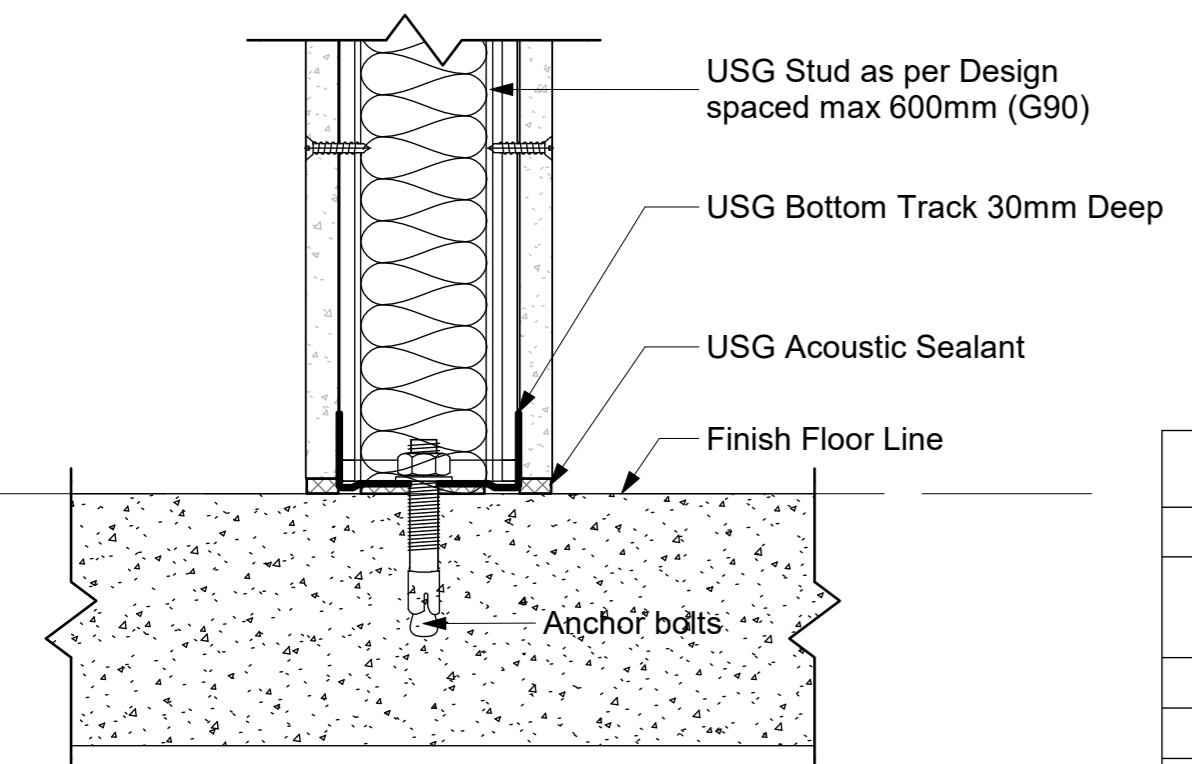
**W06**  
Scale : as shown



**1** Cut Plan  
1 : 5



**2** Wall Section-Top  
1 : 3



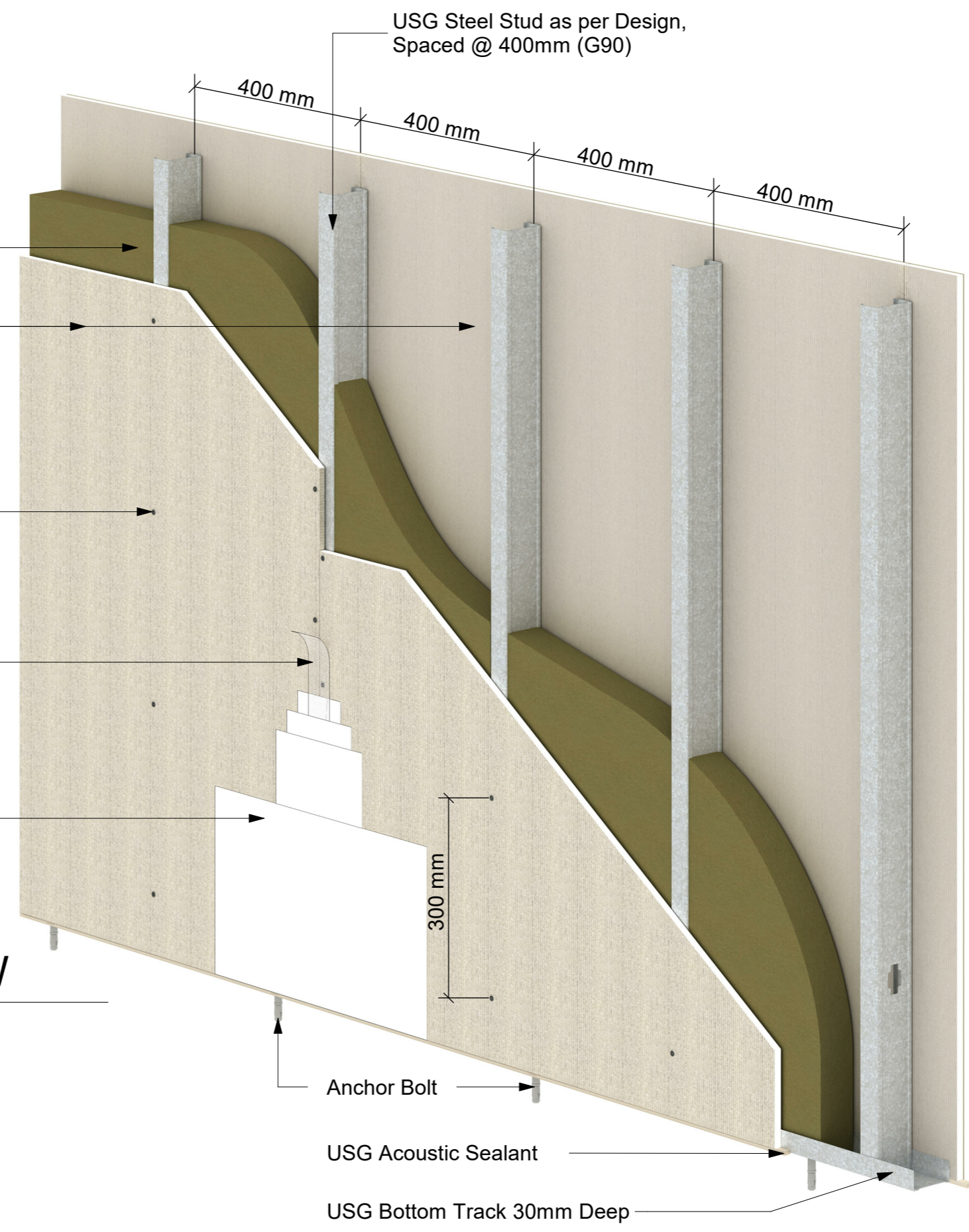
**3** Wall Section-Bottom  
1 : 3

Insulation as Required (See Table)

USG Durock® Cement Boards 12.7mm thick

25mm Self tapping Screw up to 0.6mm thick, 0.6mm thick and above self drilling screw

**4** 3D VIEW  
NTS



System Performance Table						
Boarding	1 x 12.7mm Durock both side of the C-Stud				RW/dB	Fire Rating
	Insulation					
Stud Size	16kg/m <sup>3</sup>	24kg/m <sup>3</sup>	40kg/m <sup>3</sup>	No Insul.		
62mm	-	-	-	-	-	-
72mm	-	-	-	-	-	-
92mm	-	-	-	-	-	-
92mm	-	-	-	-	-	-

Wall Finishes Schedule	
Finishes Level	Finishing Materials
1	USG Durock® Base Coat
2	USG Durock® Base Coat
3	USG Durock® Base Coat
4	USG Durock® Base Coat